

# Our **LABELS** Will Make Your Products Look Great!



**Bollin Label Systems** is a trusted name in the label manufacturing business for over 50 years.

Creating Quality Label Solutions that are effective in meeting your needs is what drives our team of experts to offer an outstanding customer experience and the best label solution.



**50+**

Years of experience printing pressure-sensitive labels.

**10+**

High-Tech printing presses & finishing equipment.

**1000s**

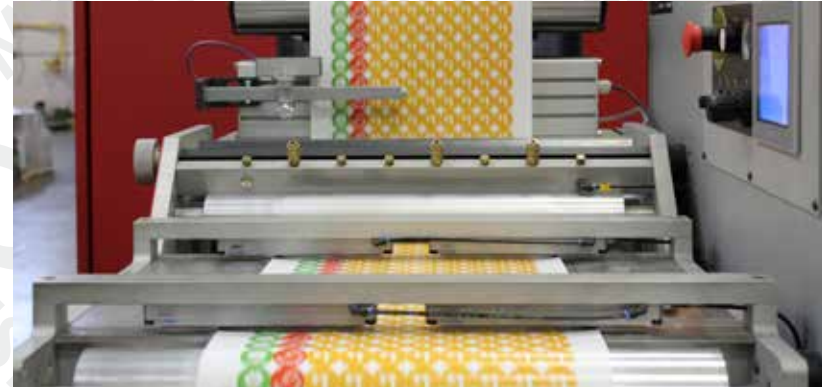
Label materials & adhesives for any product or environment.



# Flexographic & Digital Press CAPABILITIES

We're equipped to supply labels for nearly any product, merchandising, or business situation in an ever changing market by allowing you to make adjustments as your needs change. As a result, you will have lower inventory which reduces risk, volume based on the consumer and SKU demand, opportunities to target promotional ideas that reach your targeted customers and many other label solutions to accomplish your goals.

*If your labels will be applied with an automatic applicator please provide applicator specs when you request a quote.*



## FLEXO LABEL PRESSES

Description & width	Colors	How Fast
11" Rotopress	Up to 4	750 ft/min
11" Rotopress	Up to 6	750 ft/min
11" Nilpeter	Up to 8	750 ft/min
13" Rotopress	Up to 8	750 ft/min

**Capabilities:** Adhesive deadening, printing on liner, lamination station, sheeted labels, in-line video web inspection and a UV protection option.

- COUPON LABELS
- VARIABLE DATA
- BAR CODING & QR CODING
- PERSONALIZATION
- BRAND DESIGN
- VERSIONING



**Bollin  
Label  
Systems**

Quality labels, Effective solutions

[www.bollin.com](http://www.bollin.com)

For additional information on **Bollin Label Systems** capabilities or to request a quote, contact your local Bollin account manager **call: 800.882.5104** or **email: sales@bollin.com**

07-2020

## DIGITAL LABEL PRESS

Description	Colors	Ink	Finishing Stations
Xeikon 3300	CMYK + White*	QB-IC Dry Toner	Varnish Overlamine, Die Cut

**Capabilities:** Quick, short and mid-sized runs, variable data/barcoding, interchangeable expansion colors available for wider color gamut\* and press runs 63 ft/min.

